



# DALNAVERT MUSEUM AND VISITORS' CENTRE

---

## S E N S O R Y M A P

---

L A S T U P D A T E D J A N U A R Y 2 0 2 3

# I N T R O D U C T I O N

---

## What is a sensory map?

A sensory map identifies sensory friendly places and areas that may pose a barrier to access for those with sensory sensitivities. Use this map as a guide for finding less crowded, quieter spaces.

---

## A Note on Access

If crowds are a barrier to your visit, please feel free to call or email us. Staff are more than happy to let you know if we are expecting multiple tour groups or any large bookings on a given day. Because we are a small museum, we generally cannot accommodate large crowds anyway.

Dalnavert Museum and Visitors' Centre is committed to making our museum accessible to all. If there is anything we can do to improve your visit, do not hesitate to let us know. You can send us an email at [info@dalnavertmuseum.ca](mailto:info@dalnavertmuseum.ca) or call us at (204)-943-2835.

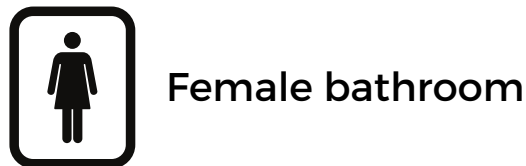
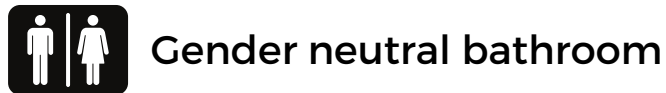
# LEGEND

---

## Sensory Symbols



## General Symbols



\* The Visitors' Centre is Dalnavert's primary event space. When in use for events, it can be crowded and loud.

# VISITORS CENTRE AND GIFT SHOP


\* The gift shop and reception desk can be busy and loud when there are multiple guests in the museum. If this poses as a barrier to you, please book in advance to minimize the amount of time spent in this area.



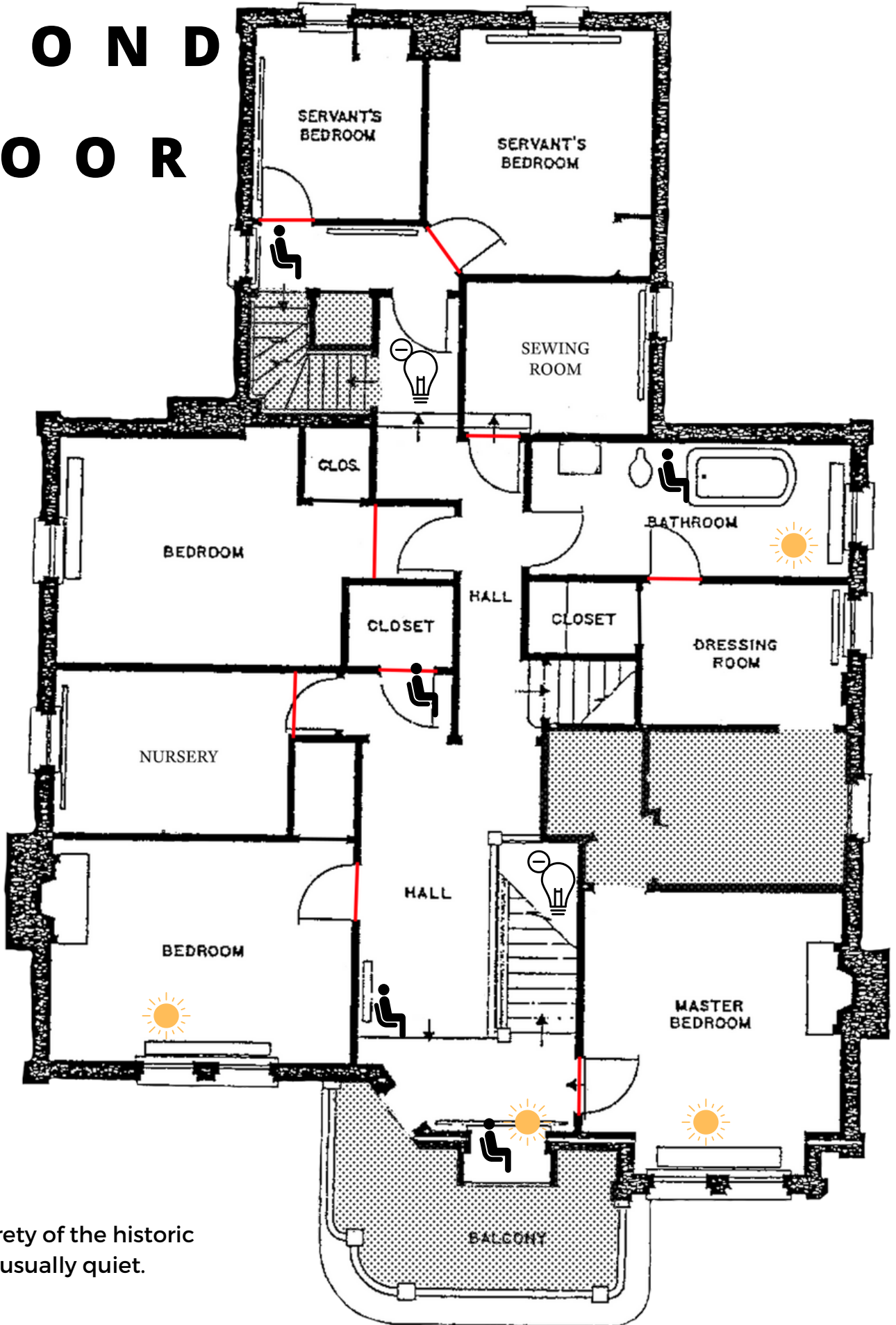
# FIRST FLOOR

- \* During the Christmas season, there is a real fir tree in the parlour. It has a strong scent but is not present year-round.
- \* We sometimes host events, such as concerts, in the parlour. It is normally quiet aside from during these events.



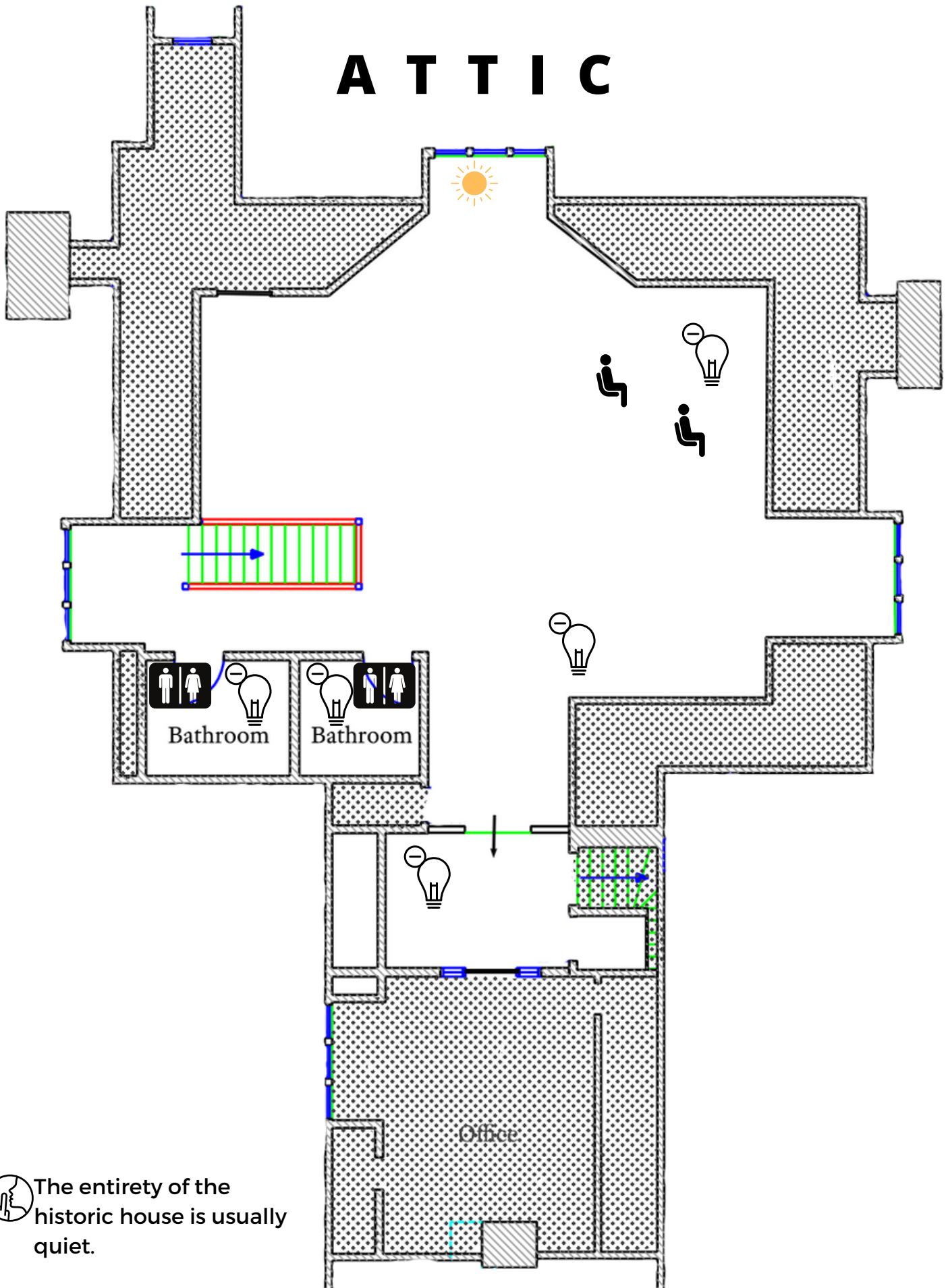
 The entirety of the historic house is usually quiet.


# SECOND FLOOR



 The entirety of the historic house is usually quiet.

# ATTIC



 The entirety of the historic house is usually quiet.

# M O R E I N F O R M A T I O N

---

For more information please visit our website [www.friendsofdalnavert.ca](http://www.friendsofdalnavert.ca). For information specifically relating to accessibility, check out [www.friendsofdalnavert.ca/accessibility](http://www.friendsofdalnavert.ca/accessibility).

Again, if there is anything we can do to improve your visit, do not hesitate to let us know. You can send us an email at [info@dalnavertmuseum.ca](mailto:info@dalnavertmuseum.ca) or call us at [\(204\)-943-2835](tel:(204)943-2835).

---

## T H A N K   Y O U F O R   V I S I T I N G



**DALNAVERT MUSEUM  
AND VISITORS' CENTRE**

61 Carlton Street

Winnipeg, MB

R3C 1N7